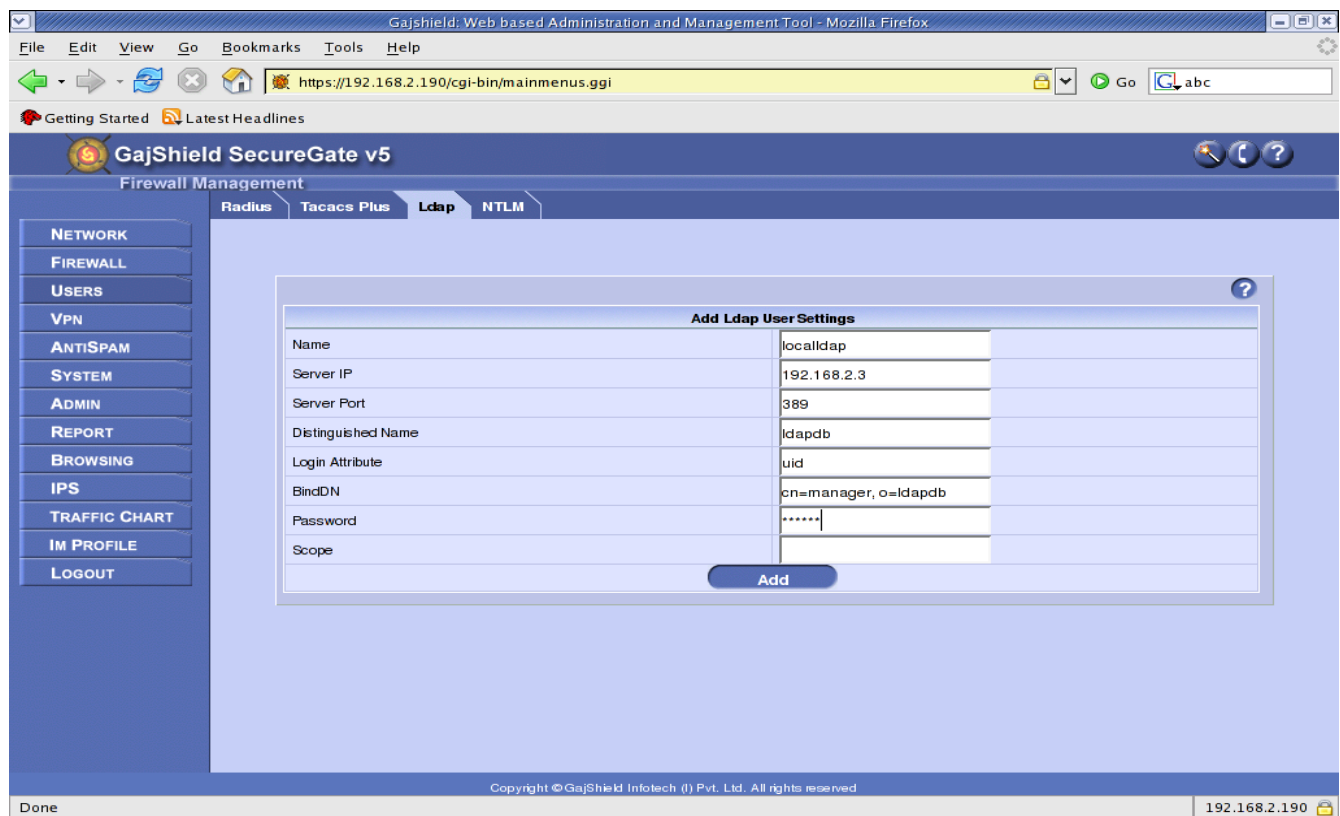


Proxy authentication with LDAP :

How to configure your proxy authentication with ldap server if you want to setup your proxy authentication with ldap server so 1st you need to configure your ldap user setting in firewall

- Name :- fill up your server name
- Server IP :- ip address of your ldap server
- Server Port - your server listen port
- Distinguished Name :-
- Login Attribute :-
- BindDN :-
- Password :- provide your server ldap password

Click on add button so all of your ldap server setting is successfully saved in firewall here you can see how to configure ldap server setting in figure 1.1



Now you need to set Proxy Authentication scheme in browsing tab under browsing option. Click on browsing tab -- setup and then click on browsing setup . You can select Proxy Authentication Scheme as ldap and click on setup.

GajShield: Web based Administration and Management Tool - Mozilla Firefox

File Edit View Go Bookmarks Tools Help

https://192.168.2.190/cgi-bin/mainmenu.cgi

Getting Started Latest Headlines

GajShield SecureGate v5

Firewall Management

Browsing Options Start Proxy Restart ICAP Restart ProxyLog

- NETWORK
- FIREWALL
- USERS
- VPN
- ANTI SPAM
- SYSTEM
- ADMIN
- REPORT
- BROWSING
 - Users Setting
 - Site Policy
 - MimePolicy
 - Category
 - Setup
- IPS
- TRAFFIC CHART
- IM PROFILE
- LOGOUT

Browsing Setup

Enter Proxy Port	8080
URL Blocker Instance	10
Enforce Strict Search on	Google Images : <input type="checkbox"/> Yahoo Images : <input type="checkbox"/>
Virus Scanning	<input checked="" type="checkbox"/>

Select Proxy Authentication Scheme

User (Login/Password) Authentication

- Local
- Radius
- TACACS+
- LDAP
- NTLM

No User Authentication

Transparent Mode

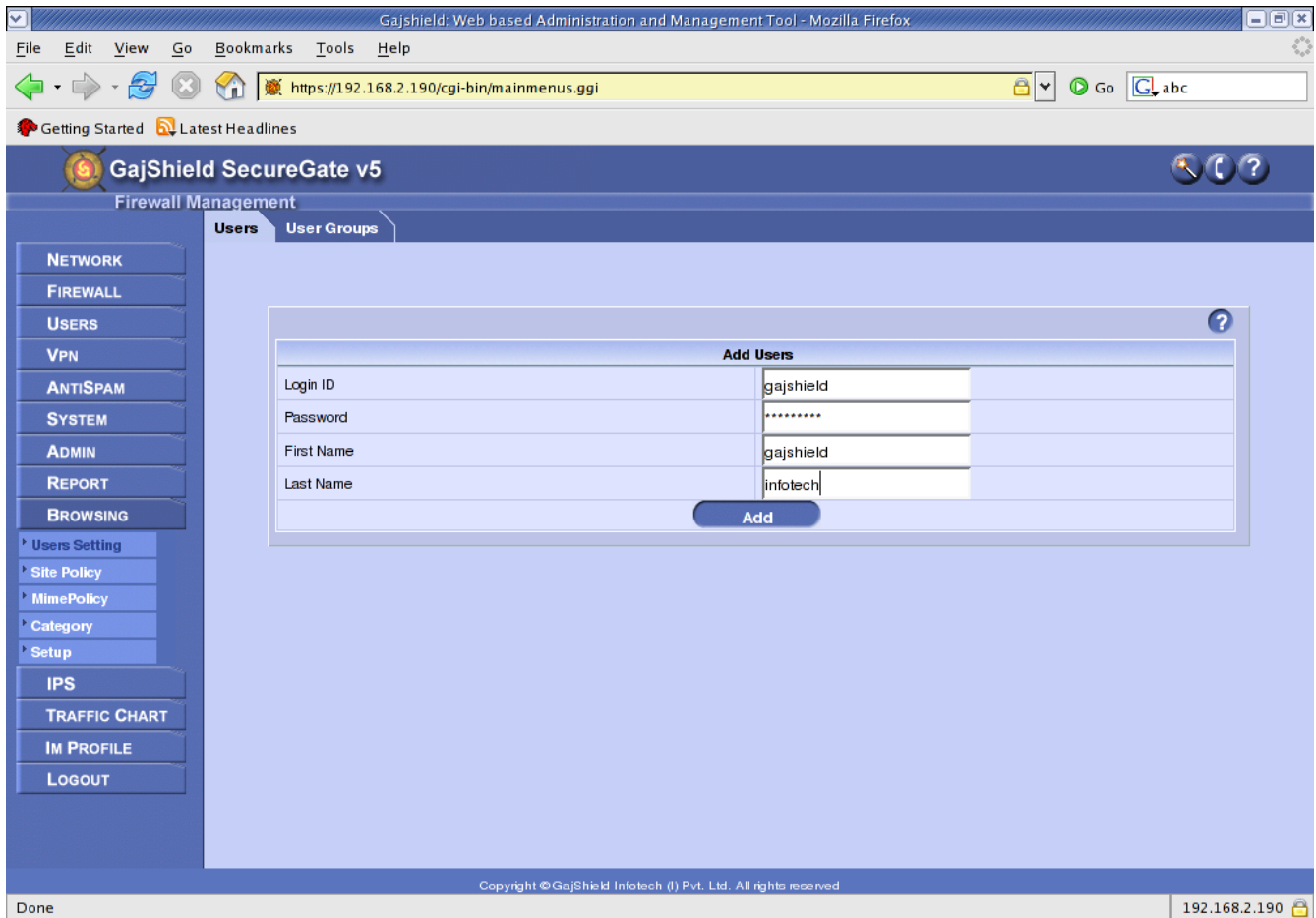
Setup

Copyright © GajShield Infotech (I) Pvt. Ltd. All rights reserved

Done 192.168.2.190

After finishing with LDAP settings, you need to create local user on firewall same as in LDAP directory structure.

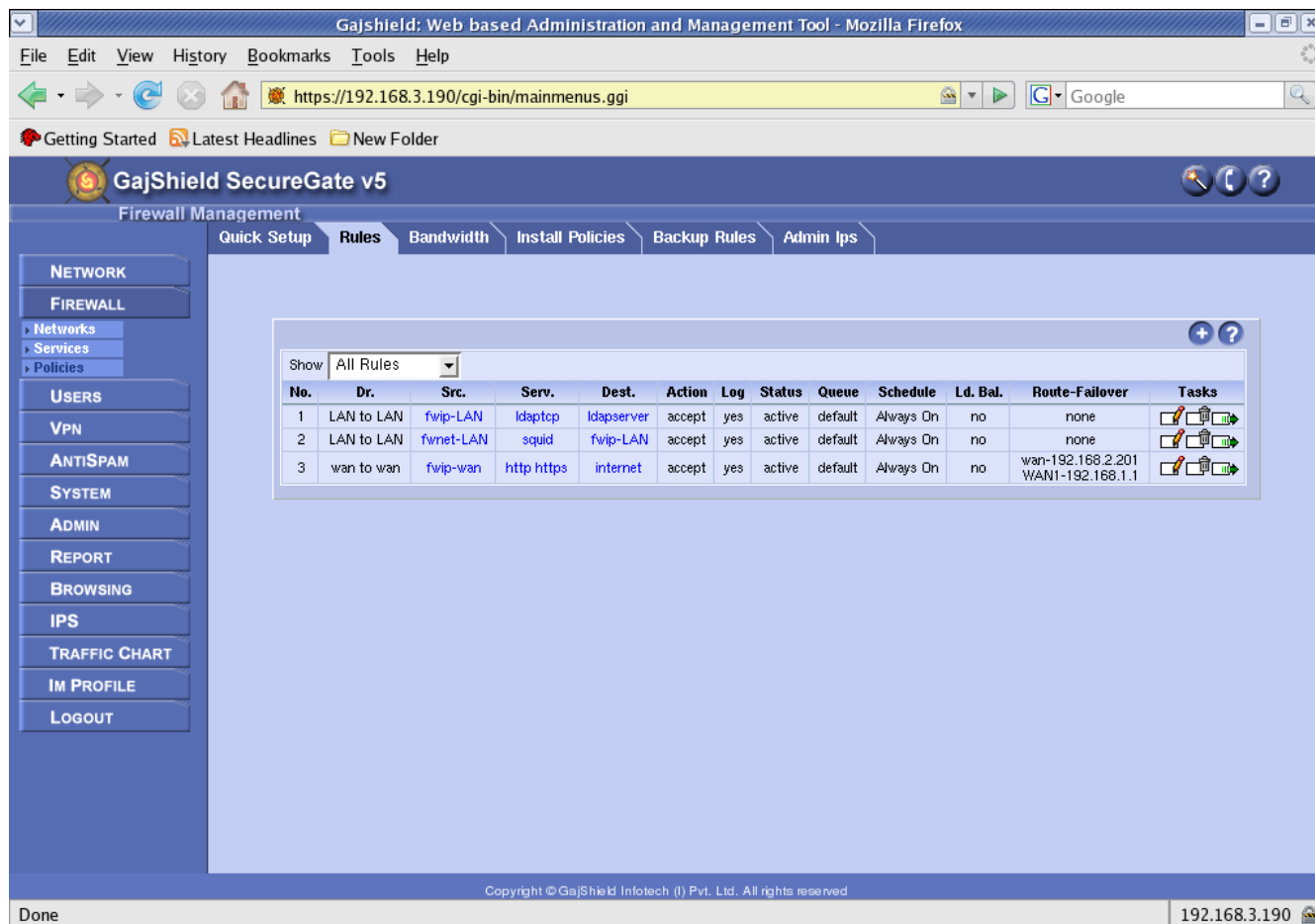
Password:- You can set any password as if request for a user come on firewall , It will pass request to LDAP for password verification. User will get authenticate using LDAP password only.



Here you can see how to add user in figure.

You need to restart your proxy services after finishing with LDAP Setup.

You need to create rules for browsing. Click on firewall-policies-rules. In below example you can see which rules to be require in this proxy authentication with ldap in figure 1.4



1st rule is for when your user send request for proxy authentication so your proxy server send your authenticate request to your ldap server

2nd rule is for when your local system send request for web browsing so it will bel accept and passed

3rd rule is for which port you want to allow for your proxy user and also set this rule in wan failover so in case if your primary link is going down so it will automatically shift over on secondary isp and in this case if your primary link is up so it will return shift on primary link .

Click on install polices, so your polices will be applied

NOTE:-- In ldap authentication mode you need to configure your proxy setting in browser