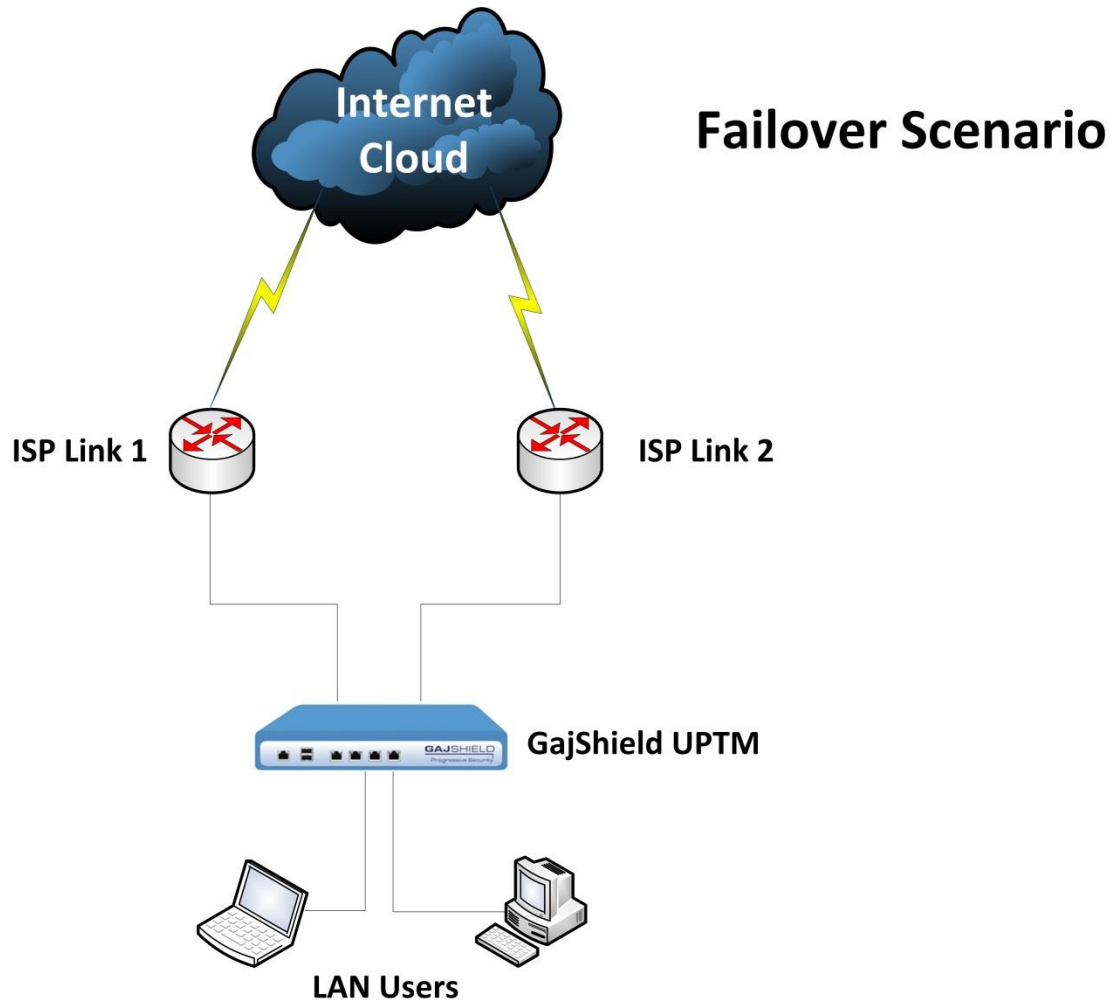


# How to configure ISP Failover

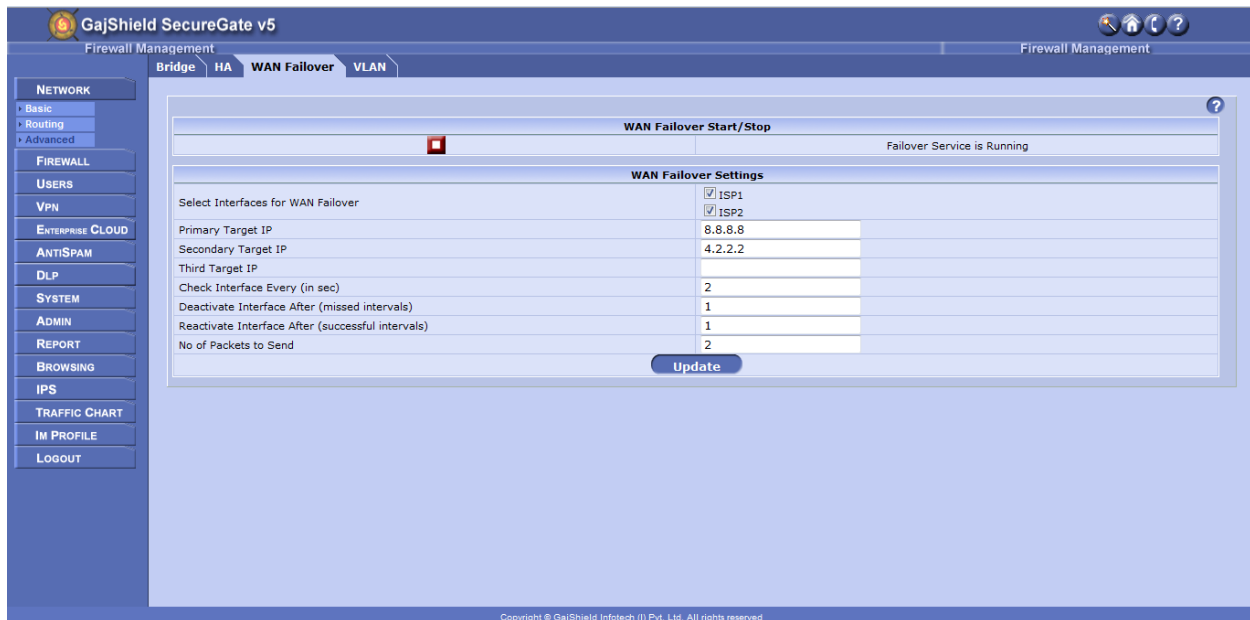


**Note:** - ISP Failover is applicable only when there are two ISP links configured on GajShield.

- ISP Failover means when one ISP link goes down, firewall will route your traffic from the next available ISP configured in firewall rules under Route-Failover option.
- Load Balancing (LB) when enabled on firewall rule, firewall will distribute traffic on selected LB ISP's on Round Robin basis. It also does a failover in case any ISP link goes down.

## Follow the instructions mentioned below to complete your ISP Failover configuration on GajShield.



**Step 1:-** After configuring the ISP's interfaces, go to Network → Advanced → WAN Failover.




1. Select the Interface which you want to configure under WAN failover.
2. **Under Primary, Secondary & Third target IP's**, make sure to add IP address which resides on the internet e.g. 8.8.8.8 or 4.2.2.2. Primary & Secondary target IP's address are mandatory & third target IP is optional.

**Note: - Use target IP's which should be reachable from selected ISP's.**

3. **Check Interface Every (in sec)** default value is 2, after every 2 seconds firewall will probes using ping through the selected ISP's to check if the internet on the selected ISP's is UP.
4. **Deactivate Interface After (missed intervals)** default value is 1, after firewall receives an request time out from the selected ISP's on the IP's configure in point 2, firewall will initiate a failover.
5. **Reactivate Interface After (successful intervals)** default value is 1, after firewall receives a reply from the ISP which was down, firewall will initiate a failback.
6. **No. of Packets to send**, default value is 2, during failover probing firewall will send two requests on the internet to check if the ISP's configured on the firewall is UP.

- Once the above settings are complete, click on update to save the settings & Start the failover service by click on , to stop the service click on  .

**Step 2:** - Failover or Load balancing (LB) needs to be enabled in the firewall policy. Go to Firewall → Policies → Rules, click on  to add firewall rule.

**Note:** - Failover and LB will be operational in the firewall policies only after WAN failover tab is configured.

**Important:** - In firewall policy at a time any one of the options can be used Failover or LB.

- Below config is an example of failover configuration.



The screenshot displays the GajShield SecureGate v5 Firewall Management interface. The main configuration area is titled "Route - Failover". It shows a rule configuration with the following details:

Dir.	Src.	Serv.	Dest.
LAN to Any	fwnet-LAN	http-transparent-proxy	any

Below the rule configuration, there are sections for "Action" (accept), "Status" (active), "Log" (yes), and "Queue" (default). A "Schedule" section is also present with dropdowns for Day, Date, Month, Year, and Time. At the bottom, there is a table for "Route - Failover" with columns for "Ld. Bal.", "Link 1", "Link 2", and "Comment".

Ld. Bal.	Link 1	Link 2	Comment
<input type="checkbox"/> ISP1	ISP1-172.16.1.2		
<input type="checkbox"/> ISP2	ISP2-192.168.10.1		

An "Add" button is located below the table. The footer of the interface reads "Copyright © GajShield Infotech (I) Pvt. Ltd. All rights reserved".

- Failover config in firewall policy is found under "Route – Failover", under this you will see the ISP's configured on the firewall, and assign priority on the links as per your requirement.

2. Below config is an example of Load Balancing configuration.

**Important: - Do not use any secure or encrypted ports when using LB in firewall rules.**



- LB settings are found under “Ld. Bal.”, select at least two ISP check boxes you want to include in LB.

**Note: - For email alert on WAN failover, please make sure “Email Settings” is configured.**

For further assistance please Contact GajShield Support on +91 22 66607450  
Email: [support@gajshield.com](mailto:support@gajshield.com)